

# Session 4

## Introduction to the Central Florida Water Initiative and our Guest Speaker Mr. John Shearer

March 30, 2016

OUC Pershing Facility in Orlando, FL

# Central Florida Water Initiative

WATER FOR TOMORROW



## The basics of water and CFWI

Learn about where your water comes from today and planning for tomorrow.



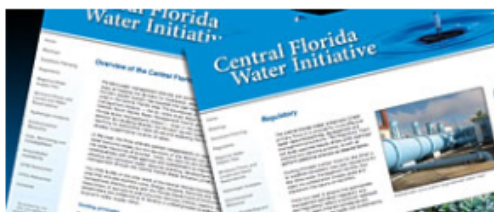
## Regional Water Supply Plan

View central Florida's water supply planning documents, including comments received during the public review phase.



## Meetings and events

Find details about public involvement opportunities.



## Steering committee and technical teams

Find information about steering committee, technical teams and technical meetings.



## Water conservation

Discover some of the most popular and preferred ways to save water.



## Other helpful information

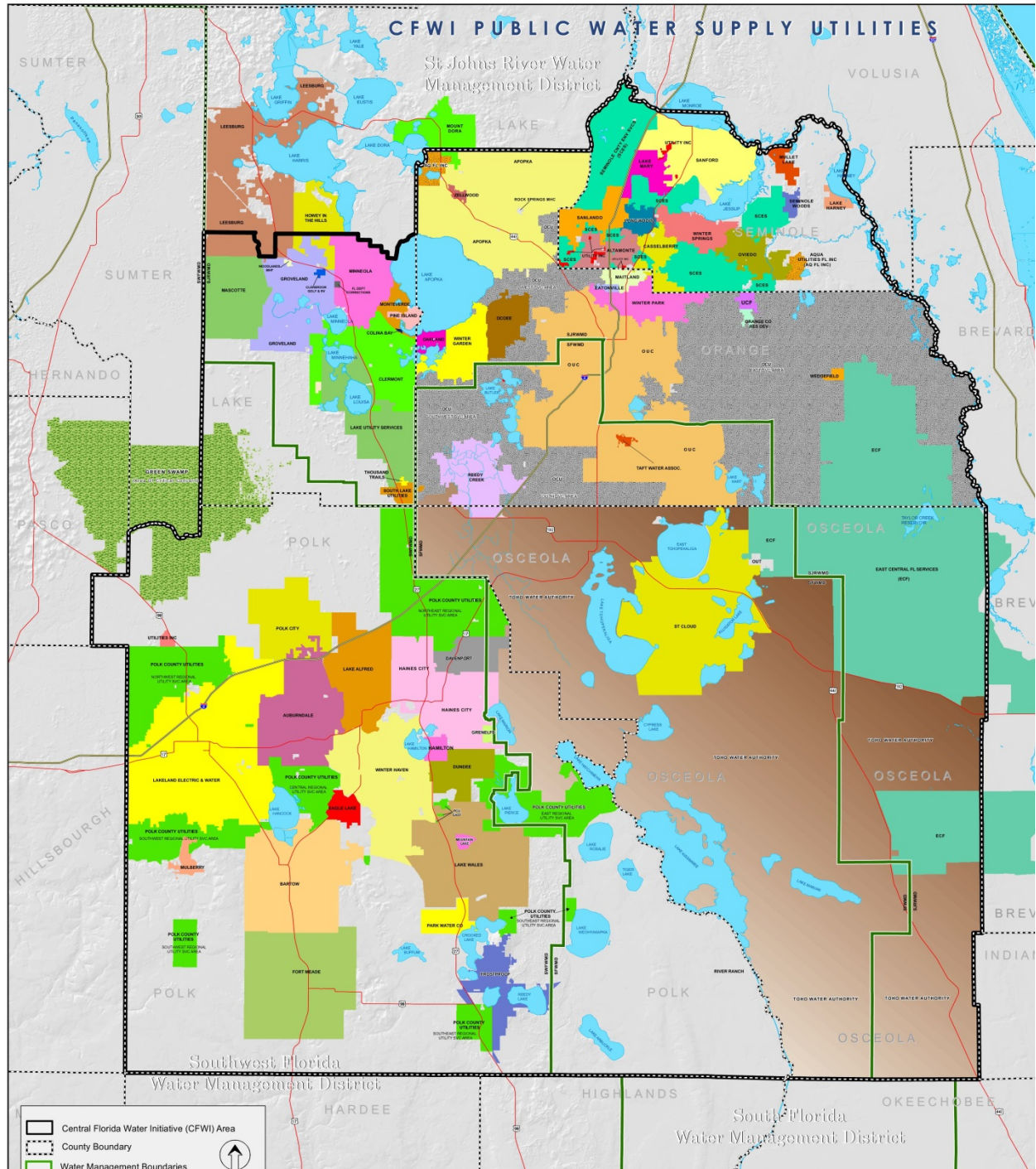
Explore the world of water through related links, publications and videos.

## Contacts

# Central Florida Water Initiative

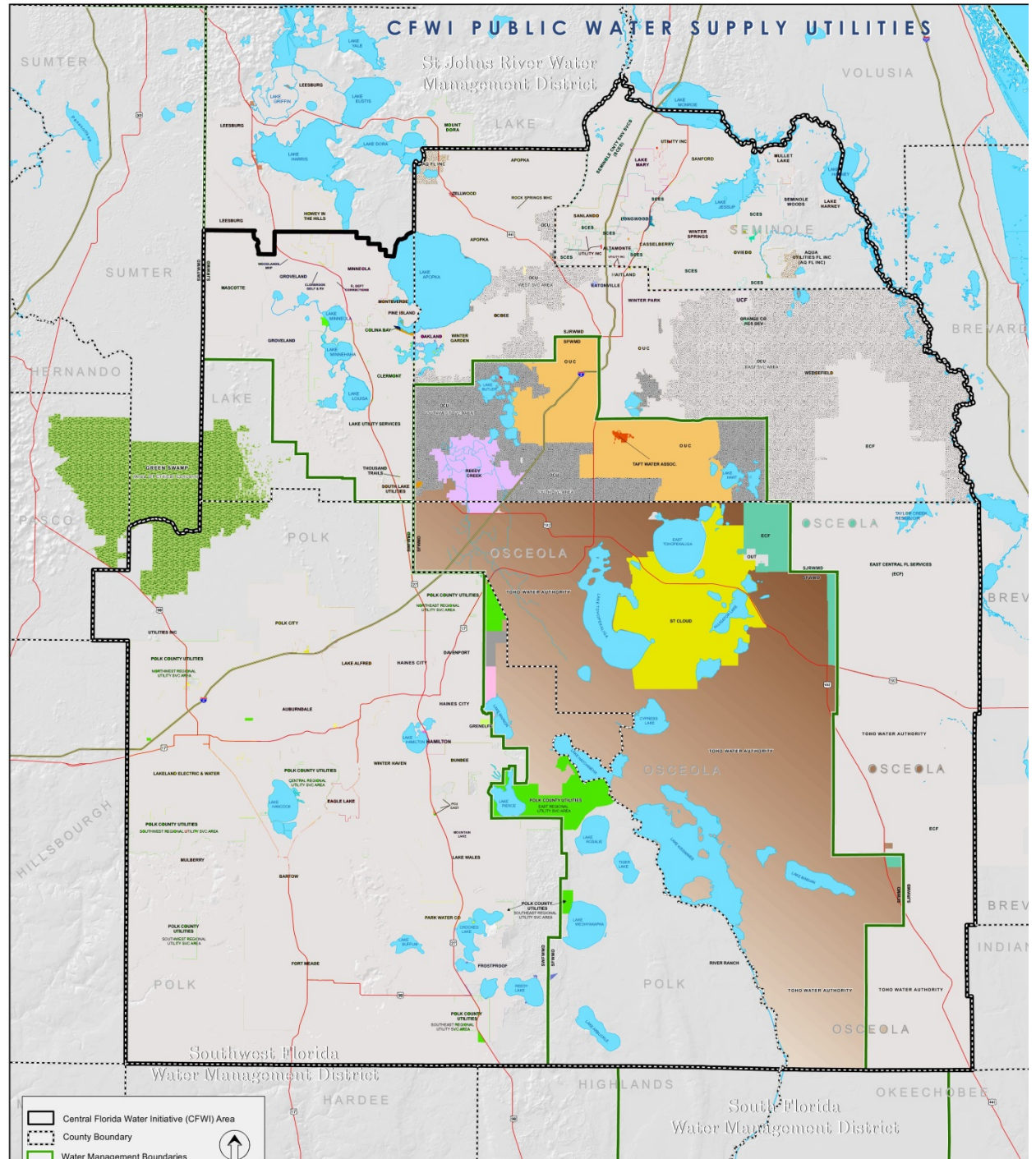
- 3 Water Management Districts
- 5 Counties
- Dozens of Local Governments/Utilities





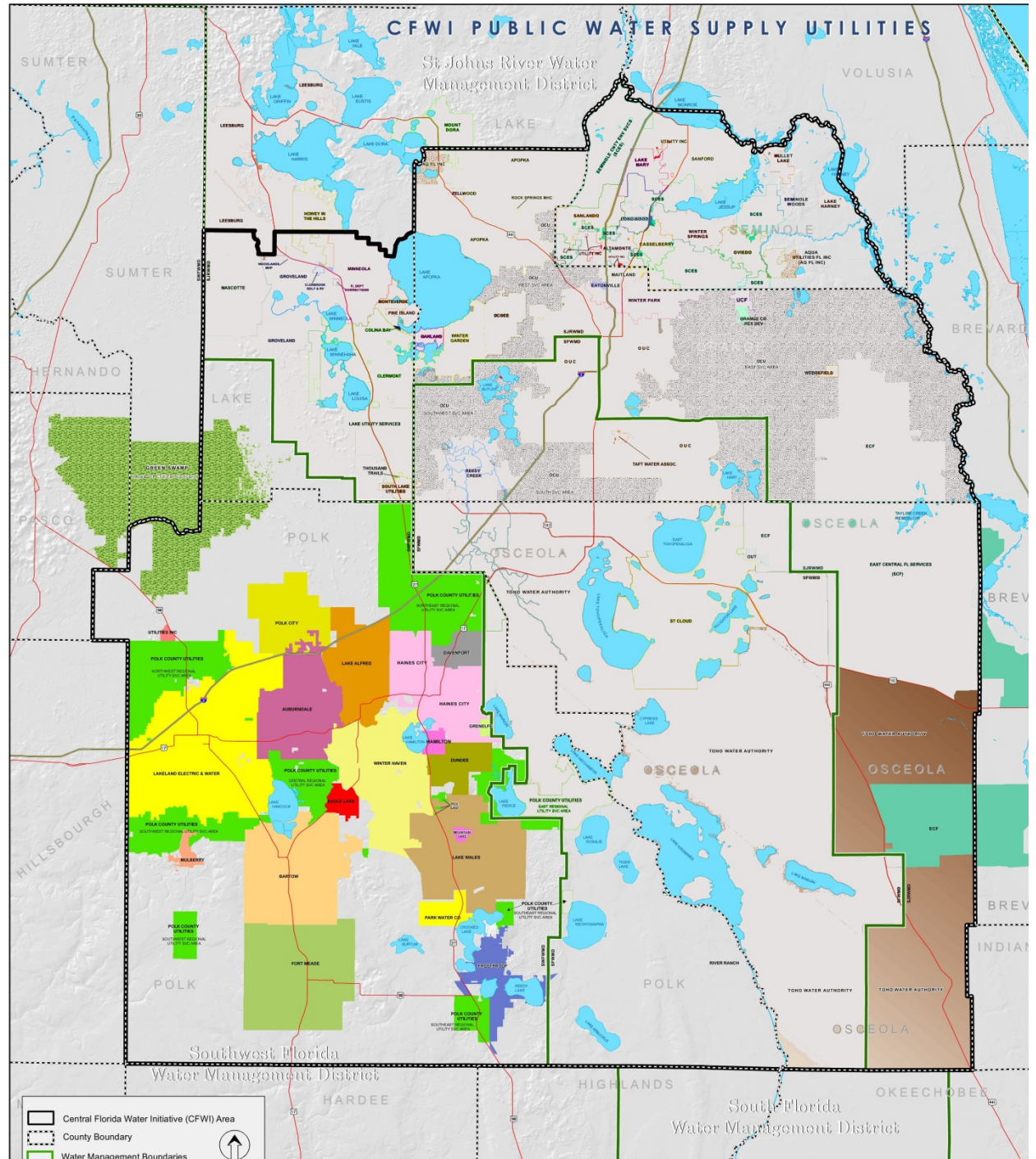


# Just Water Providers Located in the South Florida WMD





# Just Water Providers Located in the South West Florida WMD







# Just Water Providers Located in the Saint Johns River WMD

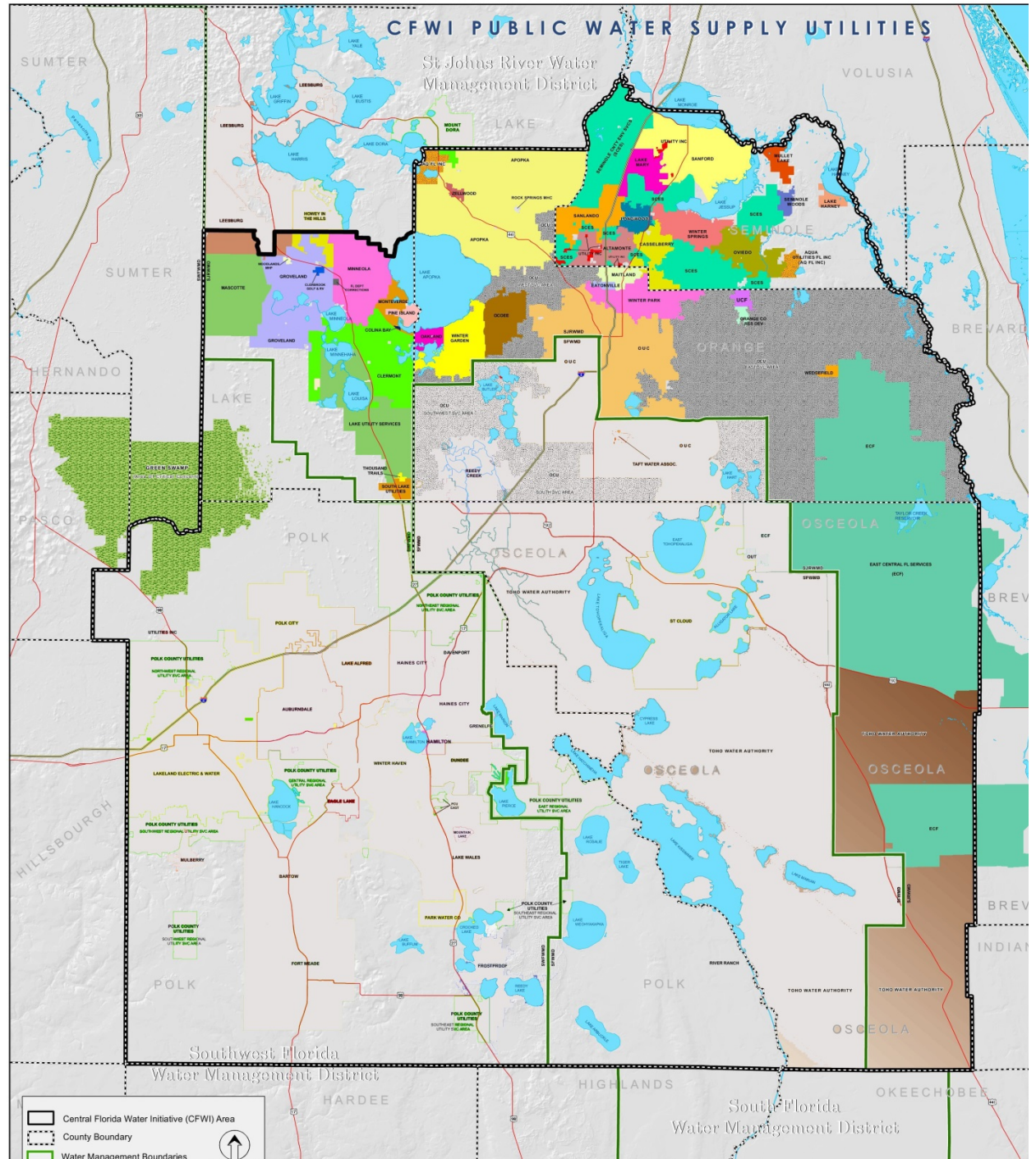
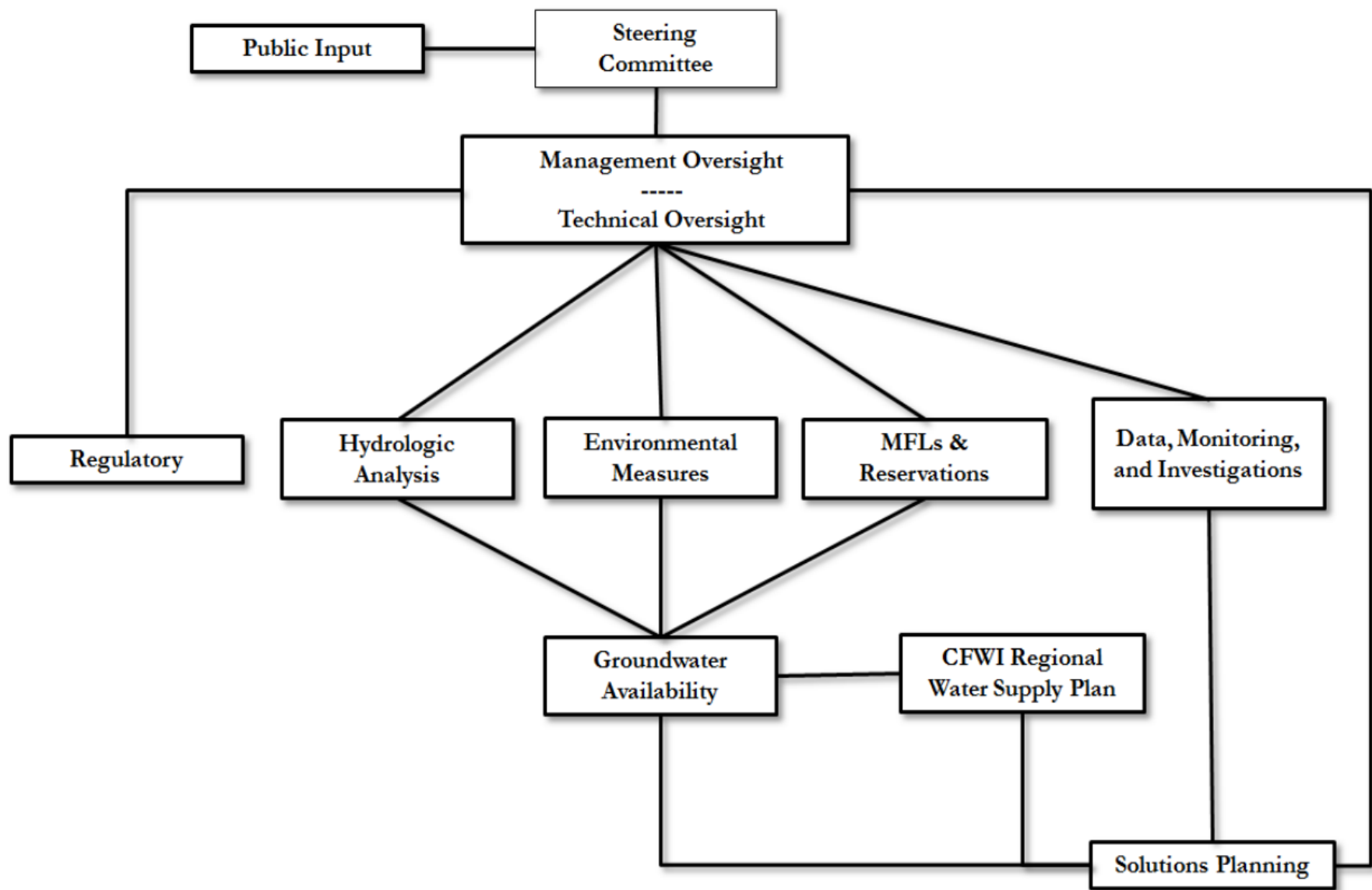
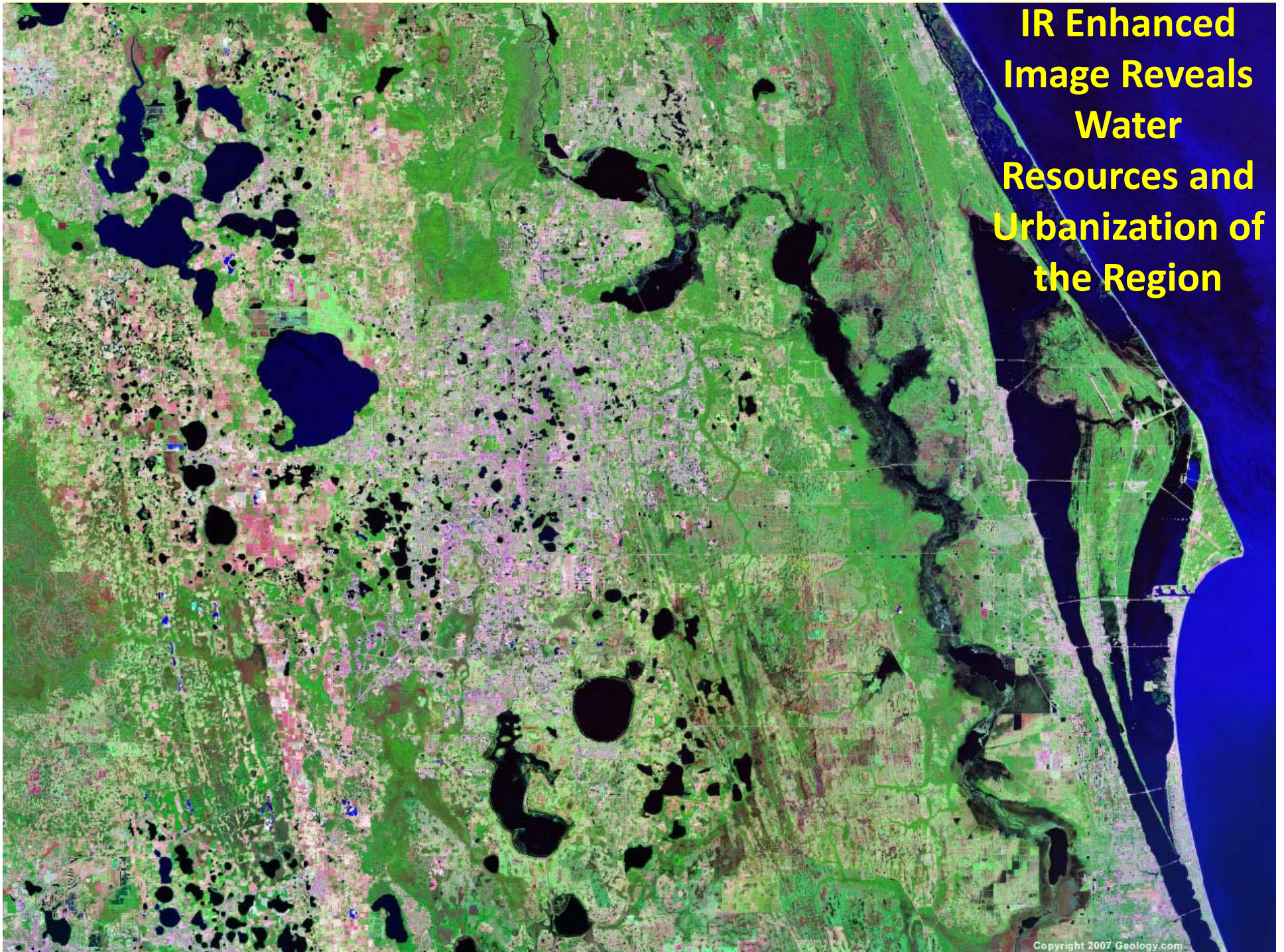


Figure 2- Central Florida Water Initiative Organization





**IR Enhanced  
Image Reveals  
Water  
Resources and  
Urbanization of  
the Region**







- Rock Springs located at Kelly Park in Apopka is one example of the region's unique hydrologic natural treasures



# Our Guest Speaker Will Give us Briefing on What is New with CFWI

- John Shearer, PE, BCEE of Shearer Consulting
- 35 Years experience with complex water, wastewater and environmental issues including:
  - Assistant Secretary of FDEP
  - Executive VP with PBS&J (now Atkins)
  - President WateReuse Association
  - FES Engineer of the Year
- Facilitator for CFWI

# Central Florida Water Initiative

WATER FOR TOMORROW

## Home

### About the CFWI

- [What is CFWI](#)
- [Overview of CFWI](#)
- [Steering committee](#)
- [Value of water](#)

### Frequently asked questions

### Contacts

### Meetings

### Working groups

- [Data, monitoring and investigations](#)
- [Environmental measures](#)
- [Hydrologic analysis](#)
- [Groundwater availability](#)
- [Minimum flows and levels and water reservations](#)
- [Regulatory](#)
- [Solutions planning](#)

### Water conservation

## Contacts

For more information about the CFWI, contact:

- **Southwest Florida Water Management District**  
Jason Mickel  
[jason.mickel@swfwmd.state.fl.us](mailto:jason.mickel@swfwmd.state.fl.us)
- **St. Johns River Water Management District**  
Nancy Christman  
[nchristman@sjrwmd.com](mailto:nchristman@sjrwmd.com)
- **South Florida Water Management District**  
Dean Powell  
[dpowell@sfwmd.gov](mailto:dpowell@sfwmd.gov)
- **Facilitator**  
John Shearer  
[johnshearer@cfl.rr.com](mailto:johnshearer@cfl.rr.com)

[Sign up](#) to receive information about the CFWI via email.



# Why This is Important to Florida WCA

- First of its Kind Massive, Multi-District Modeling and Planning Effort in Florida
- Will Shape the Future of Water Supply Across a Broad Swath of Our State
- Will Involve \$ Billions in Infrastructure Investment
- Success Story - Significant Structural/Organizational Challenges Overcome
- Sophisticated Messaging Capability Will be Needed for Success
- Florida WCA can:
  - Better Understand the CFWI
  - Engage with Key Team Members
  - Identify points of Collaboration/Competition