

Regional Climate Adaptation Technical Working Group

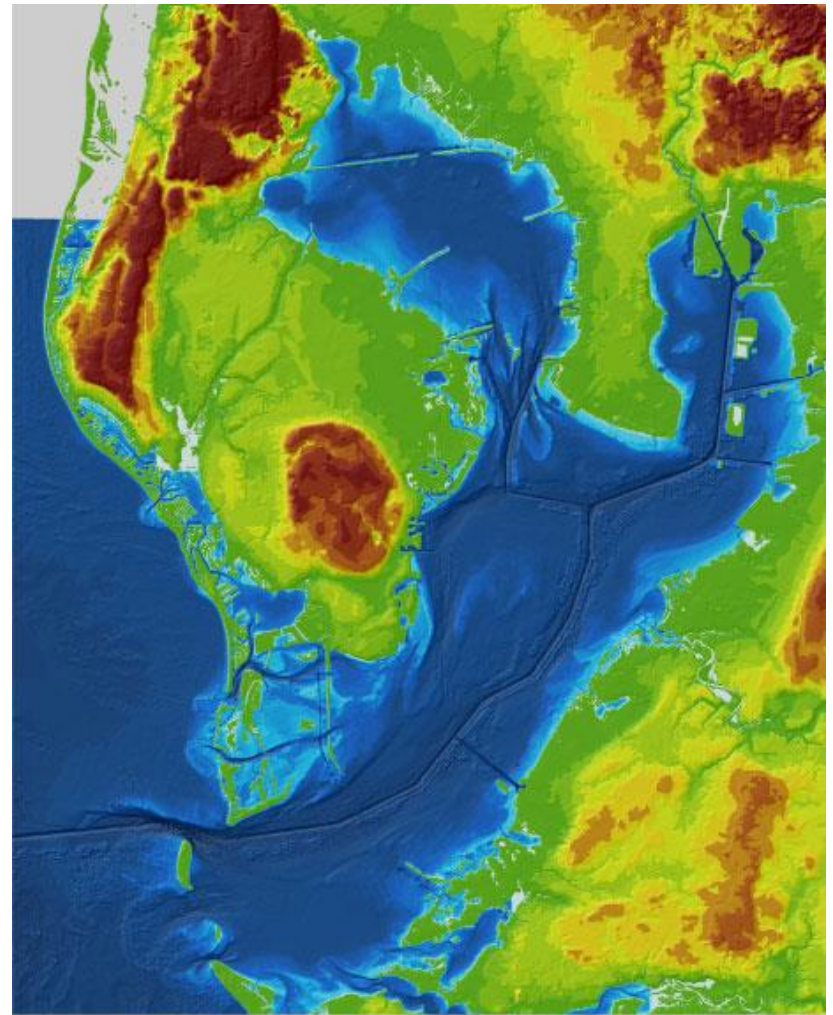
Libby Carnahan
Sea Grant Agent

Presentation Overview

- Scientific Foundation
- Regional Coordination
- Framework for Recommendations
- Next Steps
- Questions & Comments

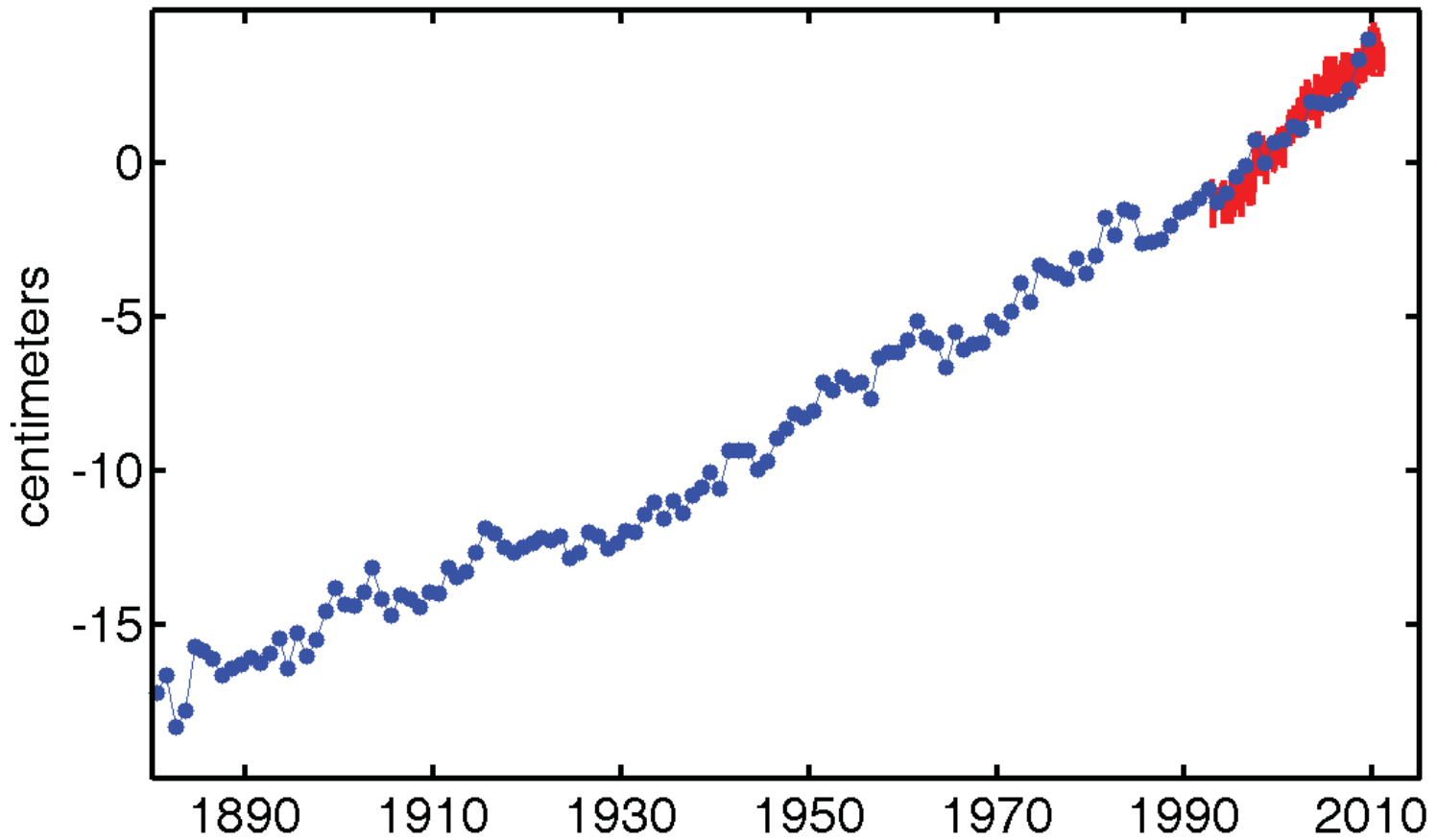
Tampa Bay

- Low-lying
- Densely-populated
- Diverse Natural Resources



Global Mean Sea Level Rise

Based on Tide Gauges (blue) and satellite altimetry (red)



Source: Mitchum, 2011

Situation

- **Climate change** issues more commonplace
- Mass information is generally **global in scale**, long time frames
- Decision makers, government employees, and residents need information to address the challenges they are facing at **local level**

Timeline of Regional Efforts

When	Action Item
January 2014	Sea Level Rise Project Inventory Workshop & Electronic Survey
January 2014	Presentation to Pinellas BoCC <i>Extreme Weather & Sea-Level Rise</i>
March 2014	Invited members to serve on Scientific Advisory Group
April-Sept 2014	Monthly Meetings of Regional Climate Adaptation Technical Working Group
August 2014	Presentation to Hillsborough BoCC <i>Changing Climate</i>

January 2014 Sea Level Rise Project Inventory Workshop



Needs Identified

Leadership
Framework

Central Web
Depository

Regional Models

Regional Climate Adaptation Technical Working Group- Overarching Goal

**Collaborate to support local
governments in their efforts to
plan for a changing climate.**

Objectives

- 1. **Convene inter-agency partners** working both within their own agency and in cooperation with other agencies on research and/or community adaptation projects related to a changing climate.
- 2. **Inventory existing projects** including project objectives, partners, time scales, and needs.
- 3. Identify existing **reports and data sets** that can be utilized by local governments in their comprehensive planning efforts for a changing climate.

Scientific Membership

Convener- UF/IFAS Extension, Florida Sea Grant

Agency Members

Tampa Bay Regional Planning Council (regional)

Tampa Bay Estuary Program (regional)

Tampa Bay Water (regional)

Southwest Florida Water Management District (regional)

Florida Climate Institute (state)

Florida Sea Grant (state)

National Weather Service, Tampa Bay (regional, national)

NOAA Fisheries Service, SWRegional Office (multi-state)

US Army Corps of Engineers (national)

US Geological Survey (national)

Scientific Membership

Academic Members

University of South Florida, School of Public Affairs

University of South Florida, College of Marine Science

Government Members

Natural Resources, Pinellas County

Environmental Protection Commission of
Hillsborough County

Environmental Protection Division, Manatee County

Environmental Lands, Pasco County

Working Objective #1

Formulate a recommendation for the methodology to utilize for a unified SLR projection for the Tampa Bay region

“Scenarios do not predict future changes, but describe future potential conditions in a manner that supports decision-making under conditions of uncertainty. Scenarios are used to develop and test decisions under a variety of plausible futures.” (NOAA)

Process

Facilitated
Discussion



Literature
Review



Context
Speakers

Context Speakers

TBRPC

- GIS Tools used in Evacuation Planning and Climate Change Modeling

USACE

- Sea Level Rise and Climate Change Risk Management for Florida

DEO

- Sea Level Rise Projection, Needs, Capacities, and Alternatives for Florida

Sea Level Rise Projection: Needs, Capacities & Alternative Approaches

A Policy Briefing for the Florida Department of
Economic Opportunity, September 2013

Prepared by Florida Planning and Development
Lab, Department of Urban and Regional
Planning, The Florida State University



SLR Projection Study Recommendations

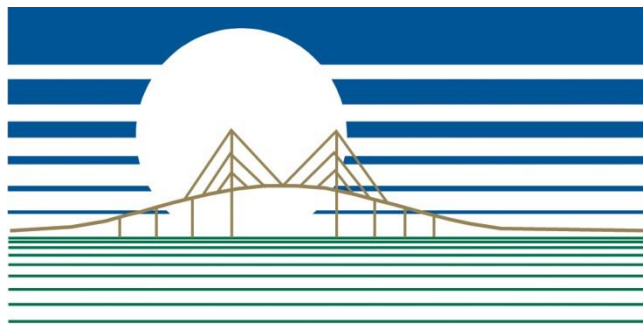
1. Decision context should guide choice of scale, resolution, and accuracy; tidal datum; and time horizon.
2. Use relative sea level rise projections from the closest tide station.
3. Projection method should be based on the most up-to-date science available.
4. Projection estimate choice should reflect planning constituency risk posture.

SLR Projection Study Recommendations

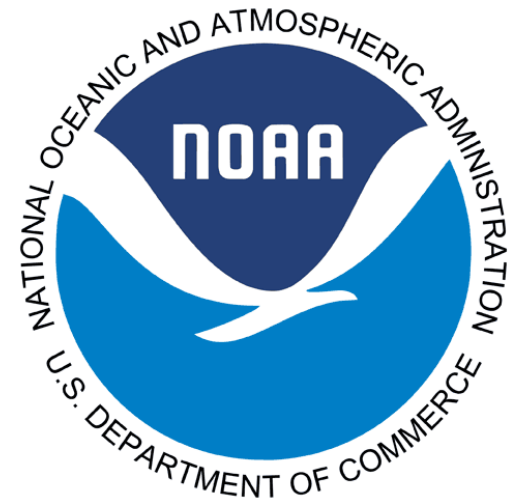
5. State inter-agency consistency for projection method and estimate is desirable to minimize confusion at regional and local levels.
6. *Develop a single sea level rise projection tool that can meet most coastal adaptation planning needs.*
7. Continue to rely on SLAMM for coastal wetland adaptation planning.
8. Develop guidance and training for using these tools.

**ONE
BAY**

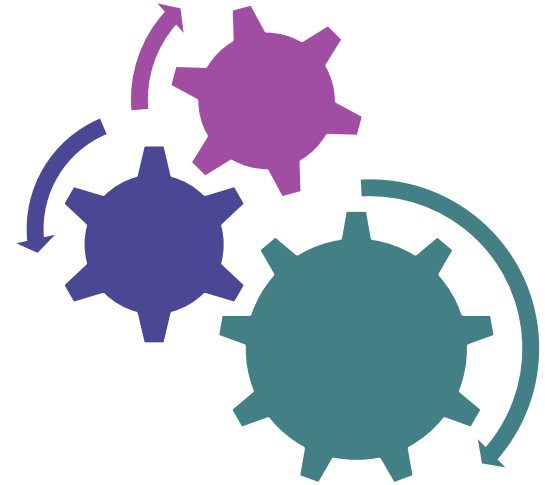
**RESILIENT
COMMUNITIES**



Tampa Bay Regional Planning Council



Next Steps



- Next Meeting– December 16
 - Draft Recommendation
- One Bay Resilient Communities
 - December- Discuss Methodologies
 - February- Distribute Draft Recommendations

Questions?

Libby Carnahan
lcarnahan@ufl.edu
727-453-6522

