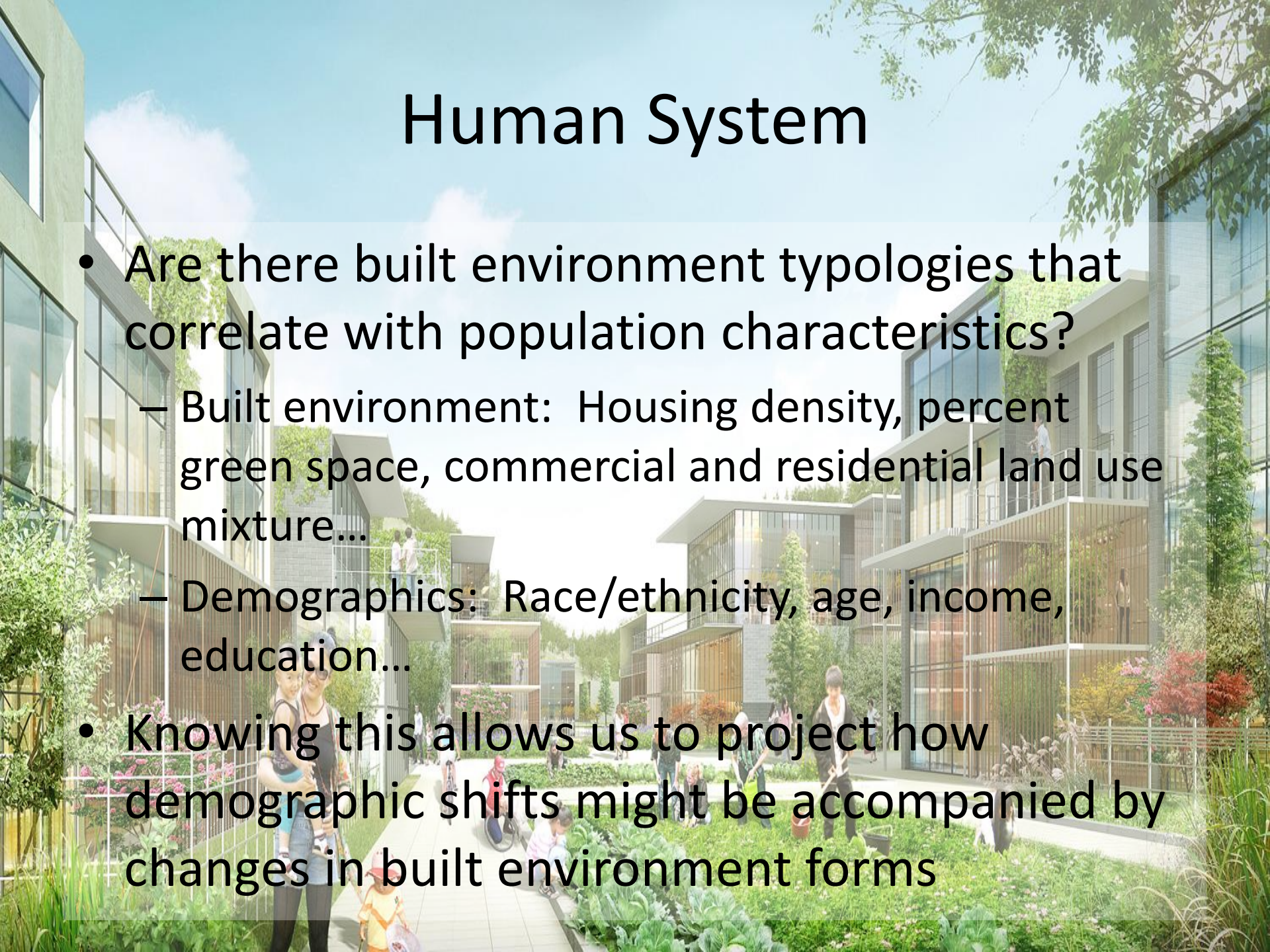


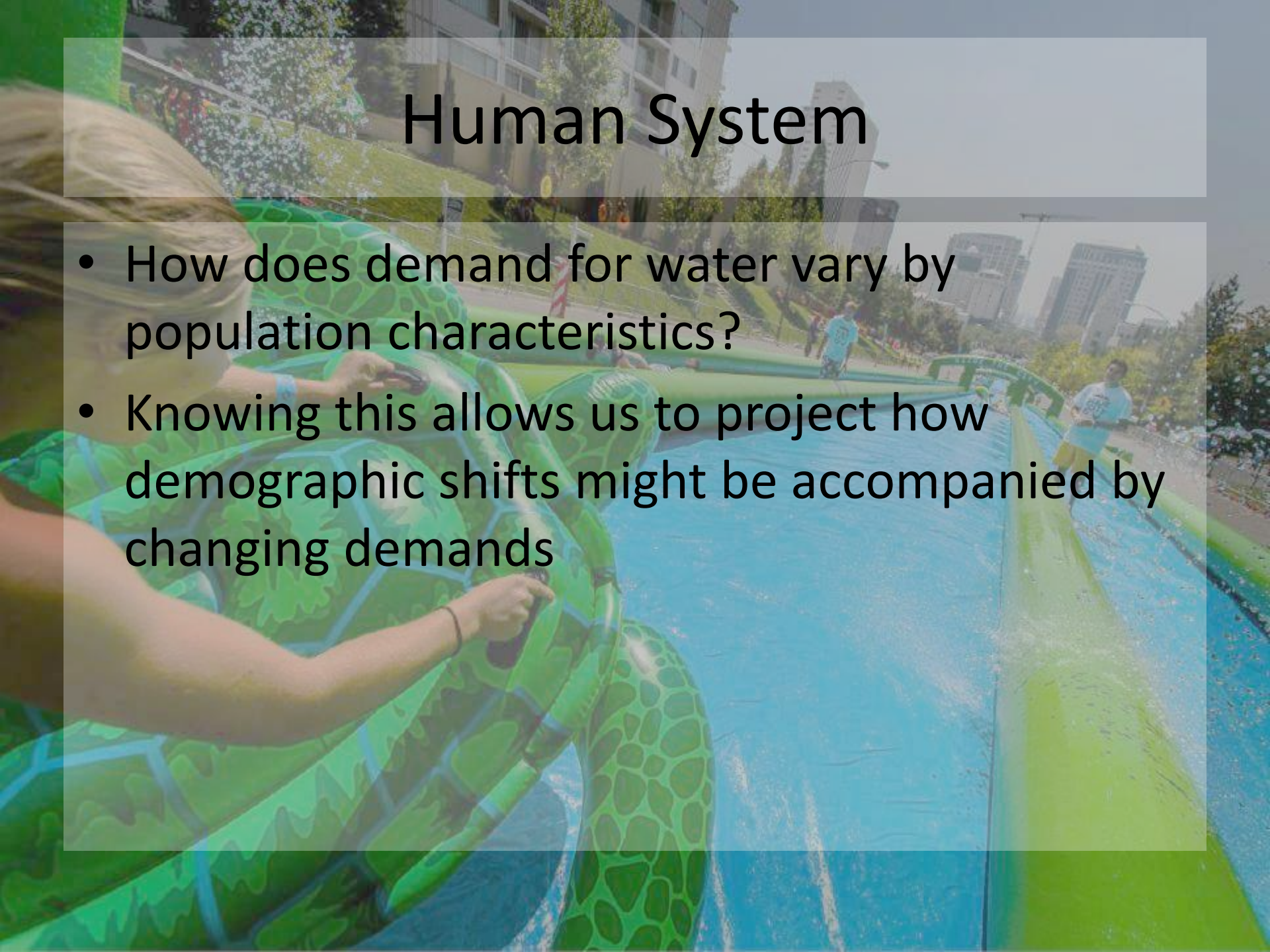
Human System

- Are there built environment typologies that correlate with population characteristics?
 - Built environment: Housing density, percent green space, commercial and residential land use mixture...
 - Demographics: Race/ethnicity, age, income, education...
- Knowing this allows us to project how demographic shifts might be accompanied by changes in built environment forms



Human System

- How does demand for water vary by population characteristics?
- Knowing this allows us to project how demographic shifts might be accompanied by changing demands



Human System on Natural System

- How do characteristics of the built environment influence water quality and quantity?
 - Built environment: % area impermeable surface, ratio of impermeable surface per resident...
 - Impermeable surfaces increase runoff/decrease permeation and groundwater recharge, increase the toxicity of runoff...
 - One remedy are built environment forms that conserve land cover and include green infrastructure

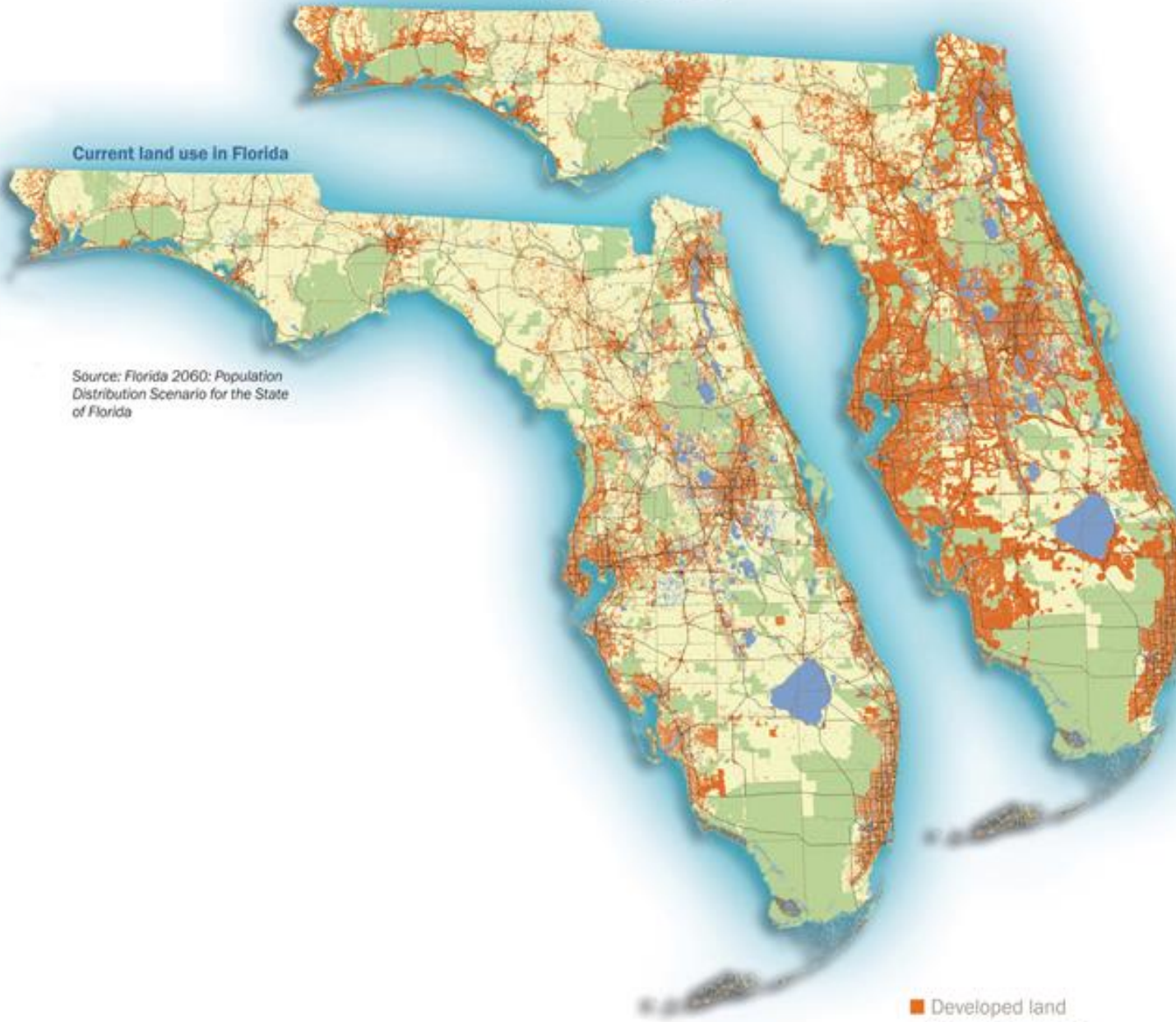
Projected land use in 2060

Current land use in Florida

Source: Florida 2060: Population
Distribution Scenario for the State
of Florida

These maps show Florida as it is
today and how it could look in 2060,
if its population doubles, as predicted, to
nearly 36 million residents.

- Developed land
- Conservation land
- Undeveloped land



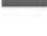
Tampa Bay/Anclote River Watershed
Distribution of
1999 Land Use/Cover

PINELLAS

PASCO

HILLSBOROUGH

MANATEE

-  Urban and Built-up
-  Mining
-  Agriculture
-  Rangeland
-  Upland Forest
-  Water
-  Wetlands
-  Barren Land
-  Transportation, Communication, and Utilities
-  Watershed Boundary
-  County Boundary



MAP 2



2 0 2 4 6 8 10 Miles

Map Creation Date: November 30, 2001