

# FloridaWCA WORKSHOP

December 20th, 2018



**Hosted by Orlando Utilities Commission (OUC), Orlando, Florida**

## **Steering Committee**

Tirusew Asefa (TBW) Co-chair  
Chris Martinez (UF) Co-chair  
Kevin Morris (PRMRWSA)  
Rob Teegarden (OUC)  
Ed Carter (SJRWMD)  
Vasu Misra (FSU)  
Tracy Irani (UF)

## **Participating Partners:**

Gainesville Regional Utilities  
Miami-Dade Water and Sewer Department  
Orlando Utilities Commission  
Palm Beach County Water Utilities  
Peace River Manasota Regional Water Supply Authority  
Tampa Bay Water  
Saint Johns River WMD  
South Florida WMD  
Southwest Florida SWFWMD  
University of Florida Water Institute  
Florida Climate Institute  
Florida State University, COAPS  
UF/IFAS Center for Public Issues Education

# GOALS



- ❑ Increasing regional relevance and usability of climate science, data, models, and tools for water suppliers and resource managers
- ❑ Use of climate science data/tools to support decision-making for water resource management, planning and supply operations in Florida

## Stakeholder-Scientist Partnership

Increasing the regional relevance of climate science and models/tools for use in water resource management, planning and supply operations in Florida.

[FloridaWCA.org](http://FloridaWCA.org)



## Projects

**Collaborative Research and Application**

## Workshops

**Exploring climate science, communication, operations, and policy**

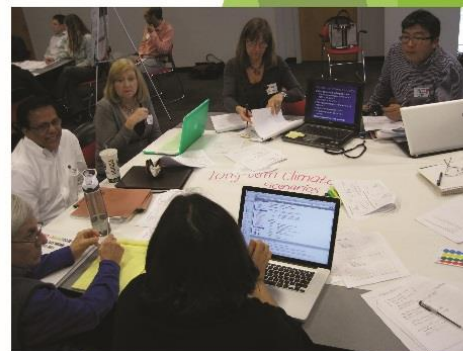
## Website

**On-line access - Florida relevant**

[FloridaWCA.org](http://FloridaWCA.org)

## Science informing action

**Informing water resource planning and operations in the face of uncertainties, risks and challenges of a changing climate.**



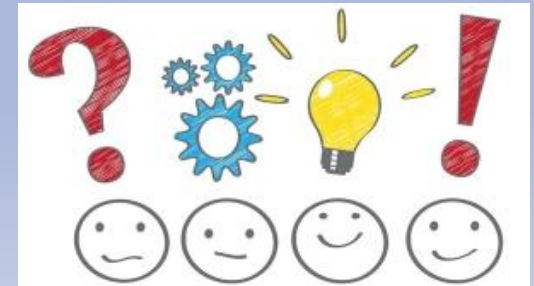
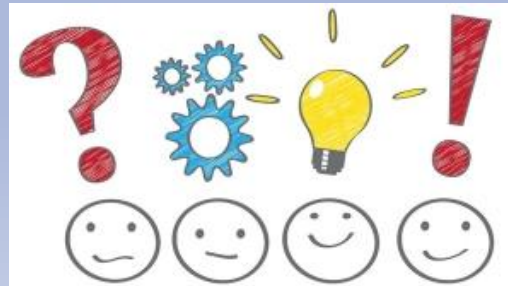
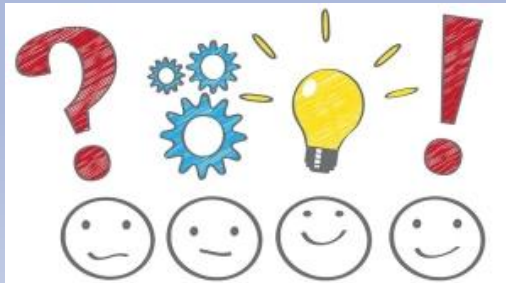
# State of the Climate



## Now what



## So what does that mean to me/us



# Now what?



1. Changes in Water Quantity and Quality
2. Deteriorating Water Infrastructure at Risk
3. Water Management in a Changing Future
4. Coastal Environments Are Already at Risk
5. Social Challenges Intensified
6. Urban Response to Climate Change
7. Land-Cover Changes Influence Weather
8. Climate Impacts on Land and Ecosystems
9. Climate Change Affects Health



## So what?

How is/could your work be impacted?  
How does/could your work have impact?

# Today's Workshop Agenda

- 10:00–10:30 Session 1: Welcome, FloridaWCA & Introductions
- 10:30–12:15 Session 2: State of the Climate in Florida & Framing the Future (impacts and resilience)
- 12:15–1:00 Lunch
- 1:00 –2:15 Session 3: Climate and Ecology
- 2:15-2:30 Break
- 2:30 –3:45 Session 4: FloridaWCA Network & Sustainability
- 3:45 –4:00 FloridaWCA Next Steps

# Session 2: State of Climate

*(moderator: Tirusew Asefa)*



- ☐ Perspectives on working with the National Climate Assessment (Esther Mullens)
- ☐ Framing the Future: Climate Change Impacts and Resilience (Tracy Irani)
- ☐ National and State-wide Update on Sea Level Rise and Climate Change (Jayantha Obeysekera)
- ☐ Collaborating on Regional Resiliency in Tampa Bay (Heather Young)
- ☐ Resiliency, Adaptation and Sustainability in the City of St. Augustine (Michael Cullum)
- ☐ Climate Science Informing Social Impacts (Vasu Misra)



# Session 3: Climate and Ecology

*(Moderator: Kevin Morris)*



- ❑ Watershed Sustainability in a Changing World: Case studies from around the world and prospects for Florida,” (Maurico Arias)
- ❑ “Florida Red Tide: a disturbance of unknown duration,” (Kristy Lewis)
- ❑ “Alternate Methodologies for Computing Evapotranspiration at a 2-kilometer resolution for Florida,” (John Stamm)
- ❑ “Florida’s Bio-economy: Potential of recycling nutrients and carbon to monetize your community’s sustainability goals,” (Rob Teegarden)



## Session 4:

# Florida WCA Network & Sustainability

*(Moderator: Lisette Staal)*



- Updates - Proposals, publications, new ideas, opportunities
- ONE Water
- Water Utilities Climate Alliance ([WUCA](#))
- Southeast Climate Adaptation Science Centers  
[SE CASC](#)
- Other ideas?

# Science Priorities 2018

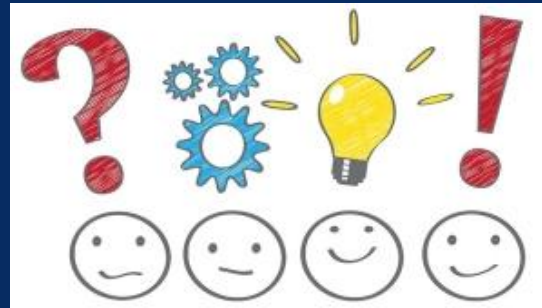


1 - **Exposure:** Improve partner understanding of what climate and land use change processes and associated biophysical stressors will look like on the land and water they manage

2 - **Impacts:** Improve partner understanding of ecosystem, habitat, and species impacts of climate and land use change, as well as the understanding of how these changes affect resources of specific concern to resource managers.

3 - **Adaptation:** Increase partner understanding of, and access to, practical guidance for framing and making smart climate and land use change adaptation decisions.

# So what?



# What's next?

# Steering Committee

Tirusew Asefa (TBW) Co-chair

Chris Martinez (UF) Co-chair

Kevin Morris (PRMRWSA)

Rob Teegarden (OUC)

Ed Carter (SJRWMD)

Vasu Misra (FSU)

Tracy Irani (UF)

## Activities

- Workshops
- Website
- Webinars
- Outreach and Communication
- Proposals/Research
- Sustainability