



# NASA ROSES: Contextual model of decision making

Tracy Irani, University of Florida

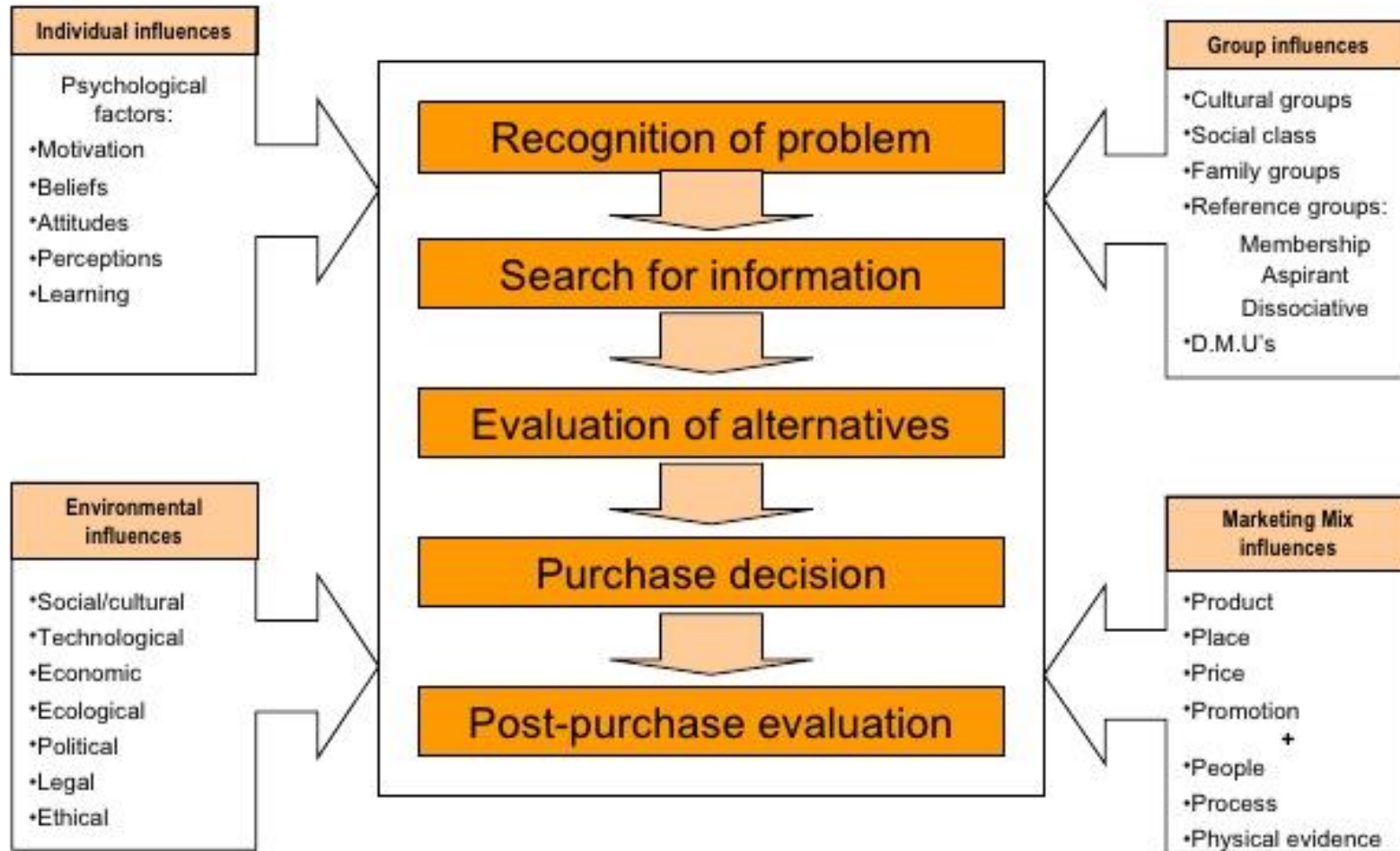


# Contextual Model of Decision Making: Specific Aims

---

- Utilize the FloridaWCA and two member public water utilities as a collaboratory for the development, implementation and refinement of seasonal forecasts that can be used to help utilities make decisions about water resource allocations
- Understand how participating in FloridaWCA affects adoption and integration of the project's tools
  - What process do utility decisionmakers use in deciding how they will use climate data in their operations (benefits/risks)
    - Comparatively is this process affected by utility characteristics
  - How does interacting with scientists and modelers as the project develops affect adoption and sustainability
  - Are other utility members of FloridaWCA likely to adopt/adapt (why/why not)

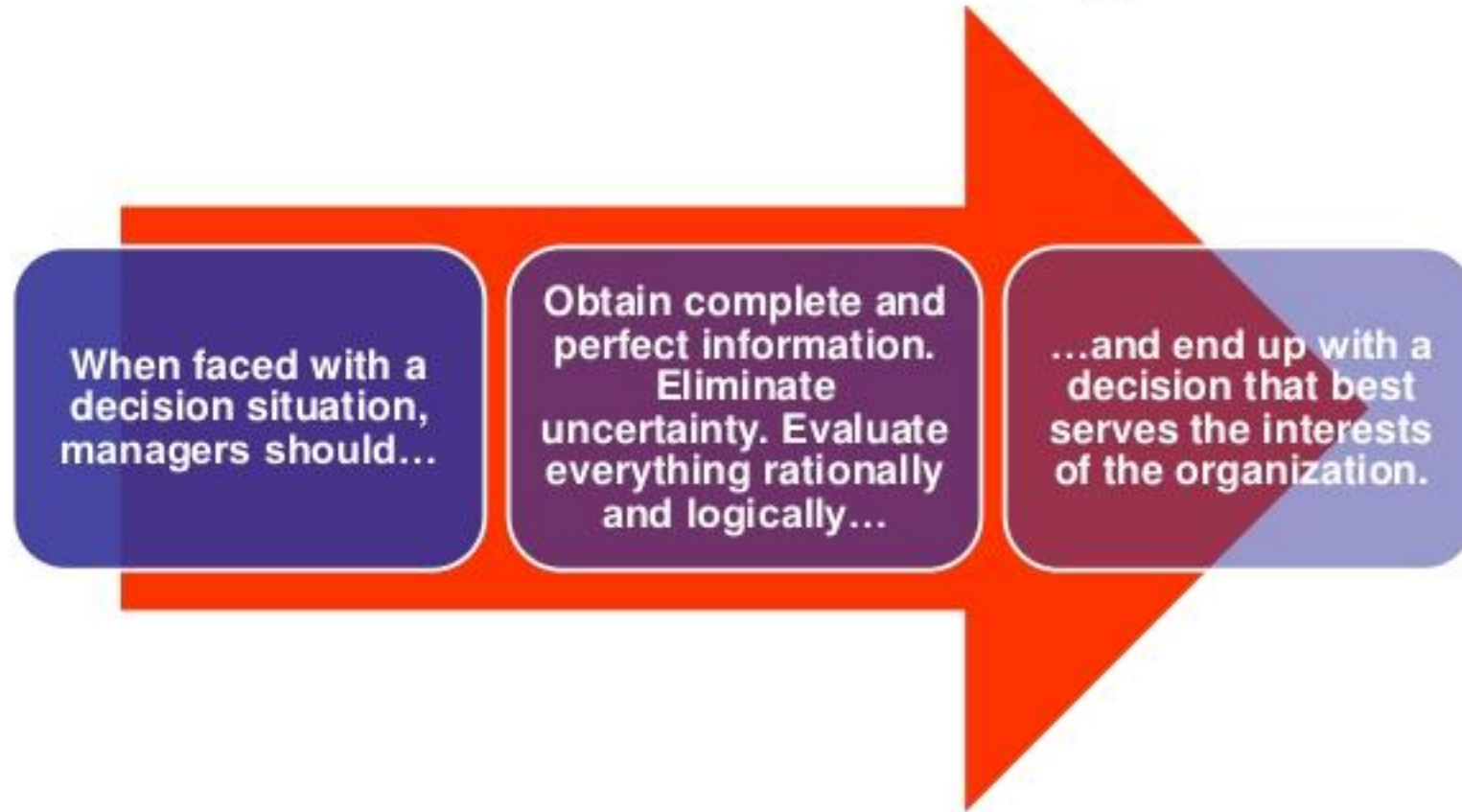
# Decision Making Process



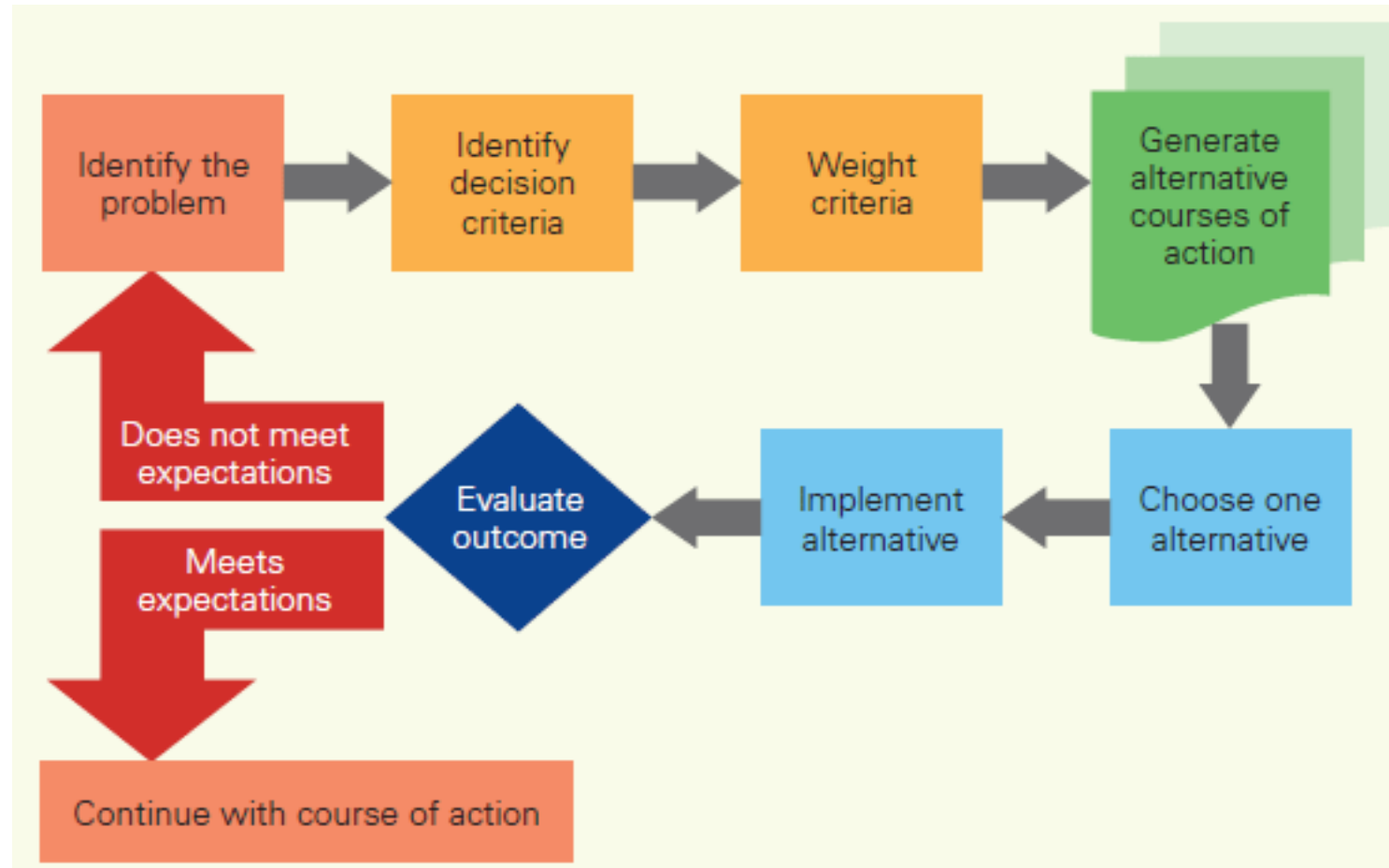
Decision as problem solving - Consumer problem solving



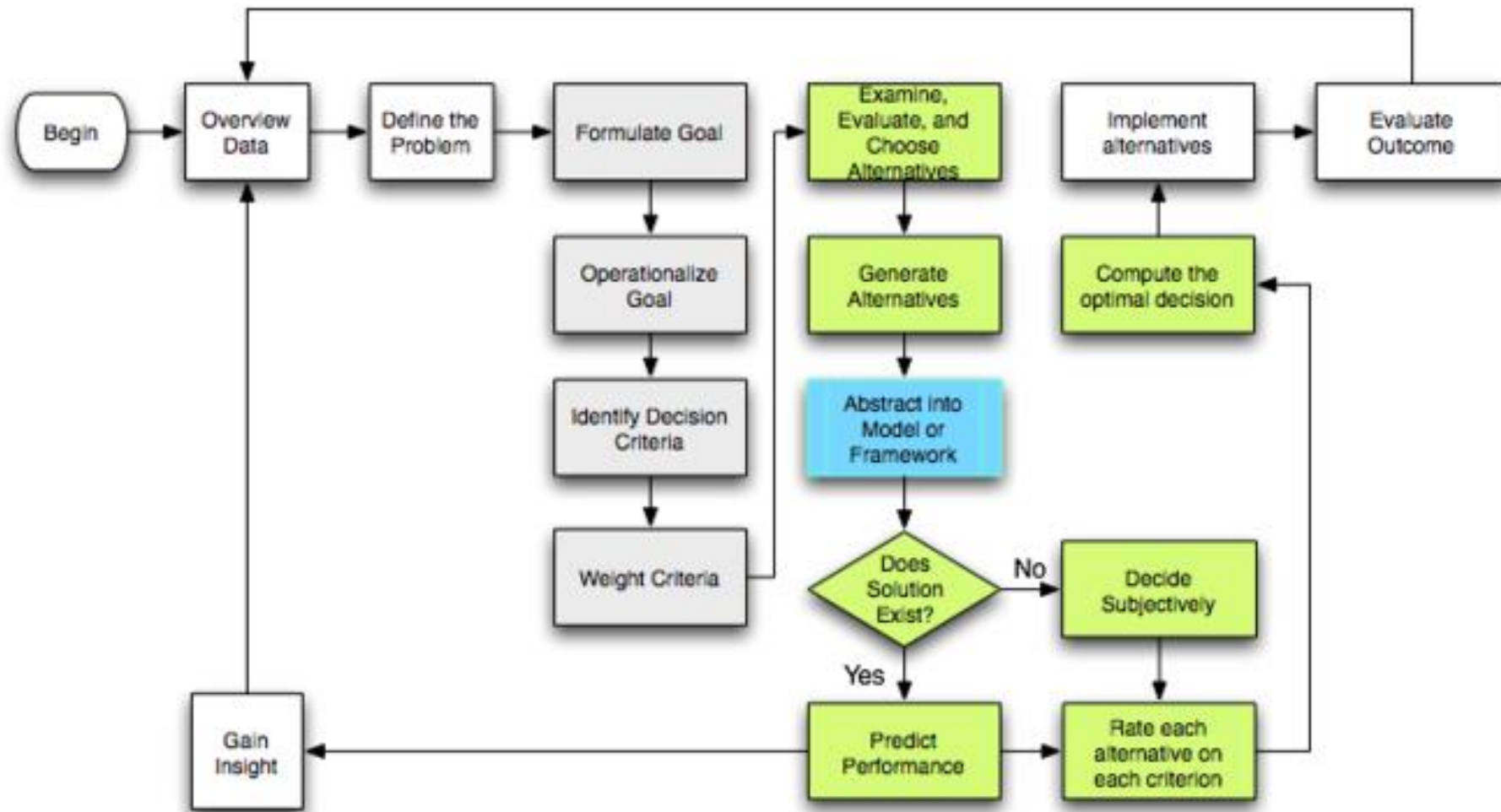
# The Classical Model of Decision Making



# Other models



# Other models





# Method

- Interview utility decisionmakers and employees
- FloridaWCA workshop presentations and survey of members
- Development of case studies including contextual model of decision making process as tools



# Working with FloridaWCA

---

- Will present results of interviews/survey of Tampa Bay Water and Peace River employees at upcoming workshops
- Will solicit comparative feedback from workshop attendees re their decision making processes
- Will ask specifically about barriers to introducing new climate data into their processes and how to overcome them
- Will develop case studies that can facilitate adopt/adapt decisions



Questions?