

Who Are We?



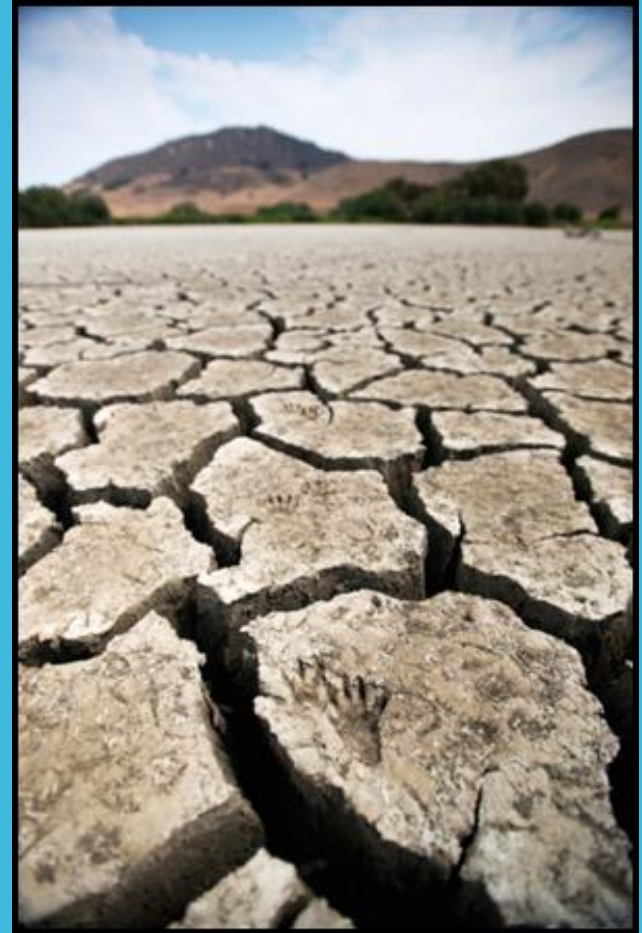
**Peace River
Manasota**

Regional Water Supply Authority

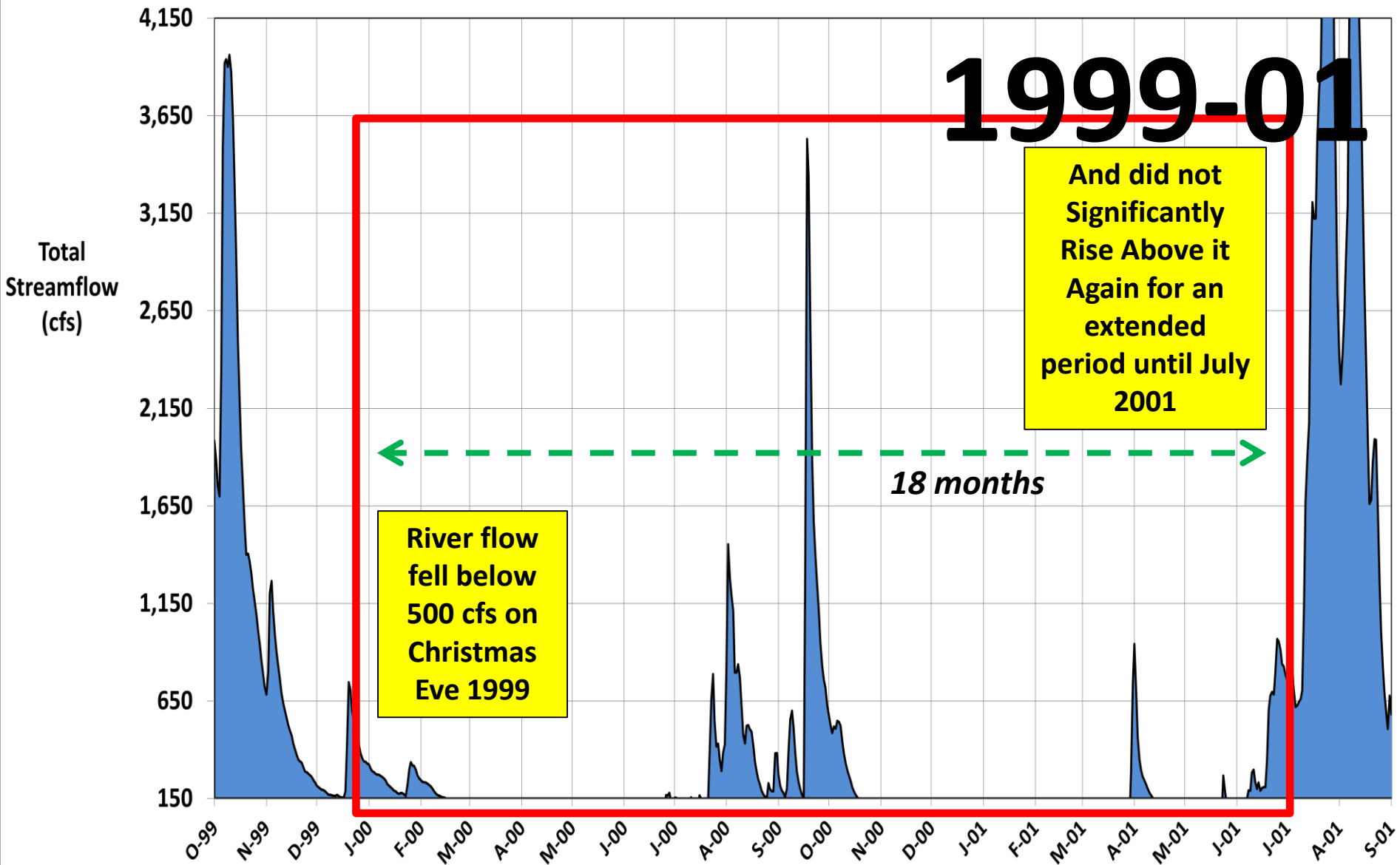


What Keeps You Up at Night?

- If you are a Surface Water System, one of the many things that worries you is the next drought.
 - When will it happen?
 - How Long/Extreme will it be?
 - How long before you realize you are in it?



Combined Streamflow for the 1999-01 Drought Event



The Upper Peace River can go Completely Dry



Picture from FDEP's "Florida's Water" webpage



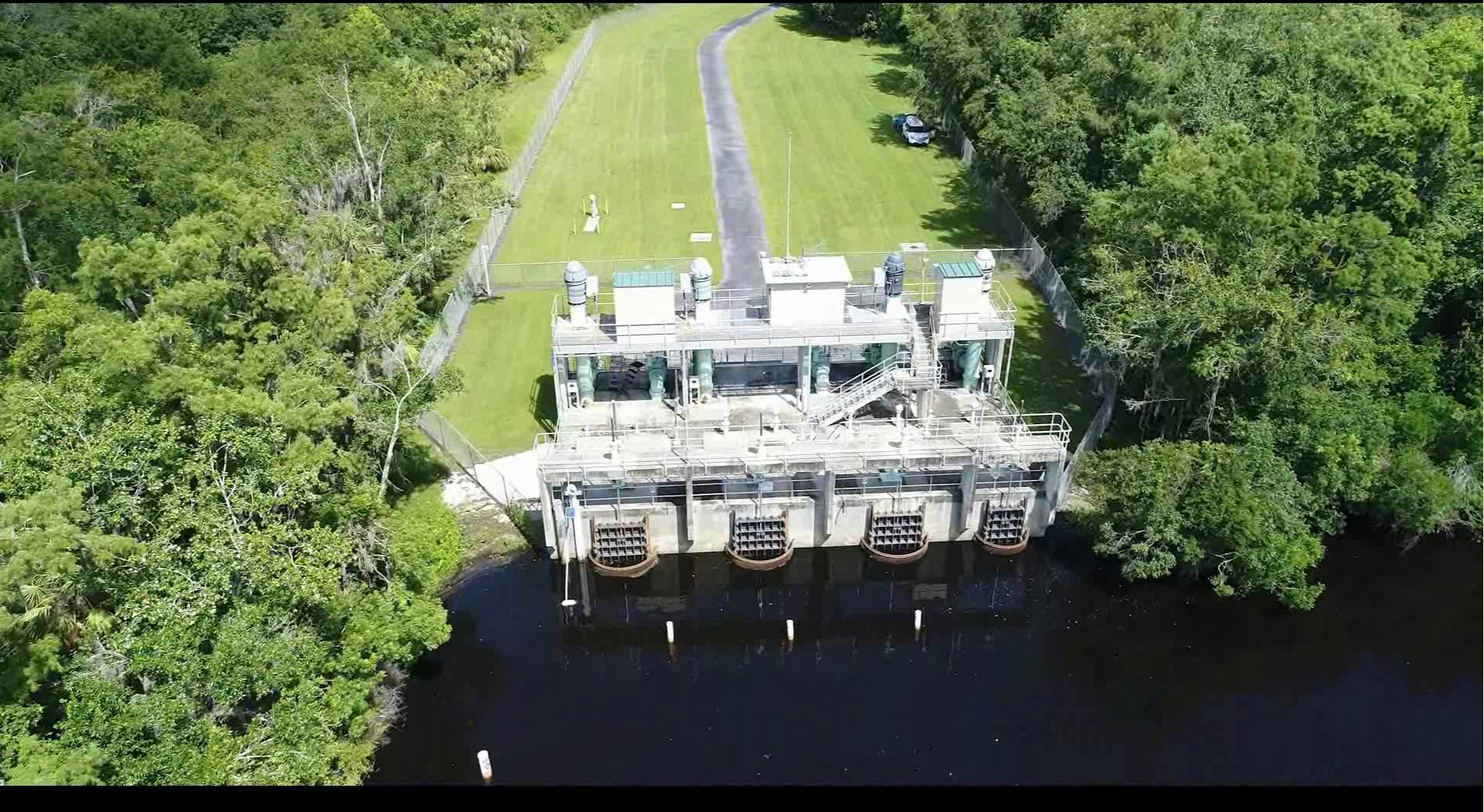
Picture by Sam Stone during 2000-1 drought



A satellite map of a coastal region, likely in Louisiana, showing a large body of water (a bay or lake) and surrounding land. A yellow dashed line traces a path from the top right, through the water, and down to the Gulf of Mexico on the left. The path is 37 miles long. Various roads and landmarks are labeled, including 'El-Jobean Rd', 'Sapona Rd', 'Bayshore Rd', and 'Pine Island Rd'. Highway markers for 777, 776, 771, 35, 17, 93, 41, 45, 78, 80, and 31 are visible. The Gulf of Mexico is on the left, and the land is on the right.

**37 miles to
reach Gulf of
Mexico**

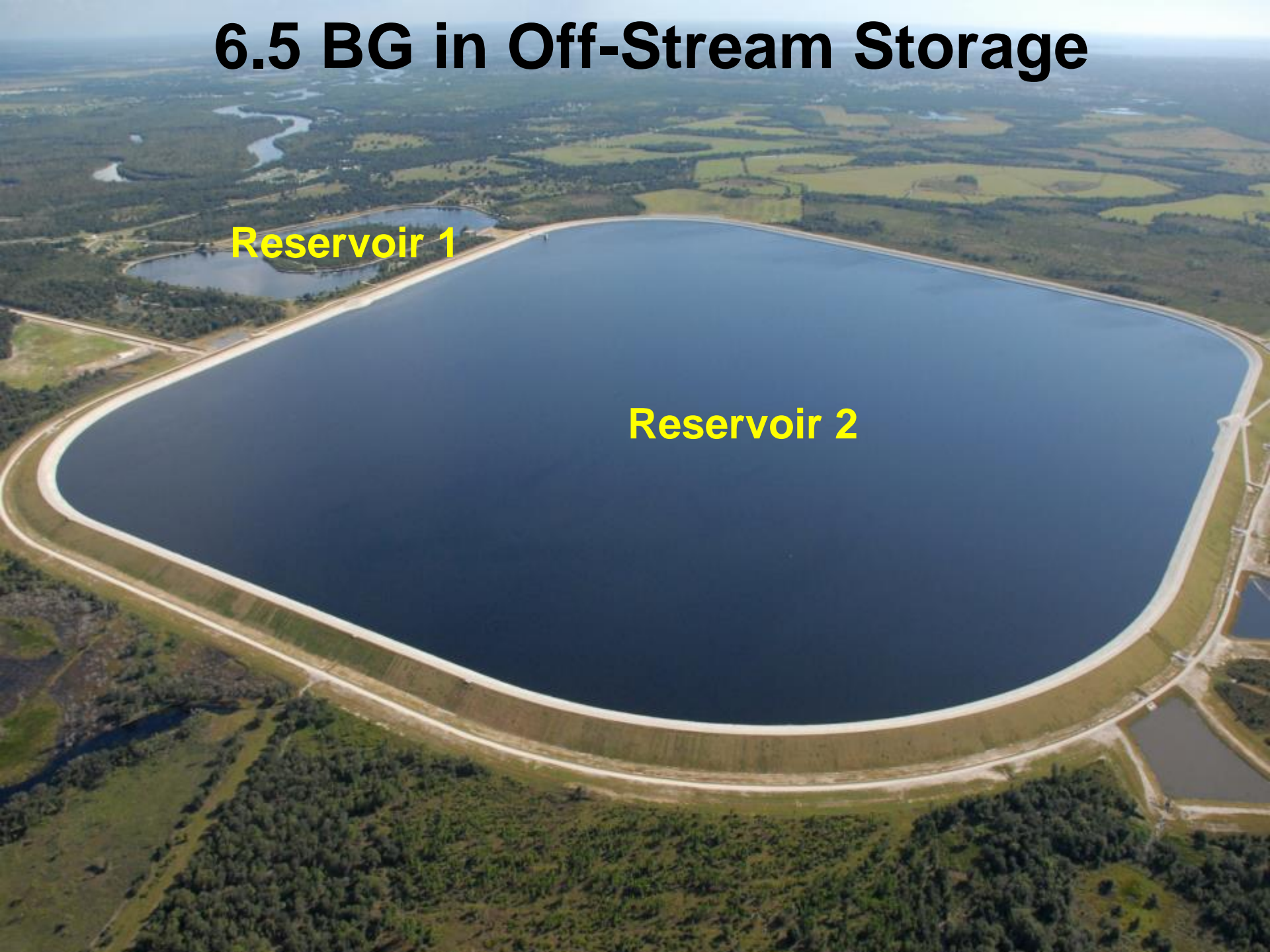
120 MGD River Intake Pump Station



6.5 BG in Off-Stream Storage

Reservoir 1

Reservoir 2

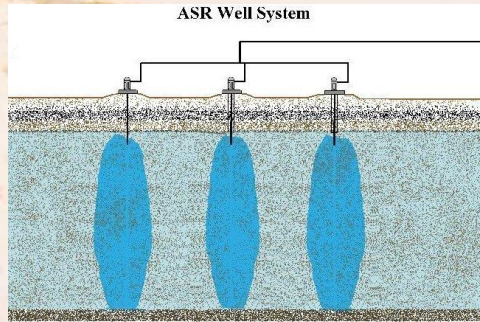


7 BG in Underground Storage

21 Finished Water ASR Wells



ASR Well System



Our Dilemma

- **When is the best time to start ASR Recharge?**
 - **What Happens if we Start Too Soon?**
 - The longer you pump, the worse groundwater quality becomes
 - The normally dark water in the reservoirs becomes progressively clearer – fueling potential for algae growth
 - **What Happens if we Wait Too Late?**
 - We can run out of water
 - May have to pump the wells so hard, you get upconing of salt water from below
 - There is Less surface water to blend groundwater into

Peace
River



Reservoir 2

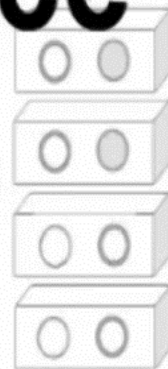
Reservoir 1

Animation Showing Cyclical Water Resource Dynamics for the Peace River Facility

ASR Wellfield 1

ASR Wellfield 2

Water
Treatment
Plant



Public Supply

Thankyou

Questions?