



MIAMI-DADE COUNTY BISCAYNE BAY TASK FORCE

- Established by Miami-Dade County Board of County Commissioners via Resolution - February 2019
- To review prior studies, relevant data, and prepare a written report with recommendations identifying problem areas, prioritizing projects, and recommendations regarding State and Federal Legislation, activities, and appropriations.
- Held 18 meetings heard 35 presentations from local and state agencies, municipalities, academia, community-based organizations, and key stakeholders.
- The final report presented to Miami- Dade County Board of County Commissioners on August 31, 2020.



Biscayne Bay in the News

WLRN MIAMI | SOUTH FLORIDA

WLRN The Florida Roundup NEXT UP: 1:00 PM

Biscayne Bay Is In Danger Of A 'Regime Shift,' NOAA Study Finds

Published August 5, 2019 at 7:16 PM EDT

f t in e

WLRN MIAMI | SOUTH FLORIDA

WLRN The Florida Roundup NEXT UP: 1:00 PM

Grand Jury Report Warns Health Of Biscayne Bay Is 'At A Tipping Point'

WLRN 91.3 FM | By [Daniel Rivero](#)
Published August 8, 2019 at 5:08 PM EDT

f t in e

Miami Herald

MIAMI-DADE COUNTY

As sewage spill gurgles near Biscayne Bay, pipe leak looks much smaller than feared

BY [DOUGLAS HANKS](#) AND [ADRIANA BRASILEIRO](#)

AUGUST 13, 2019 05:26 PM , UPDATED AUGUST 14, 2019 11:04 AM





SEPTIC

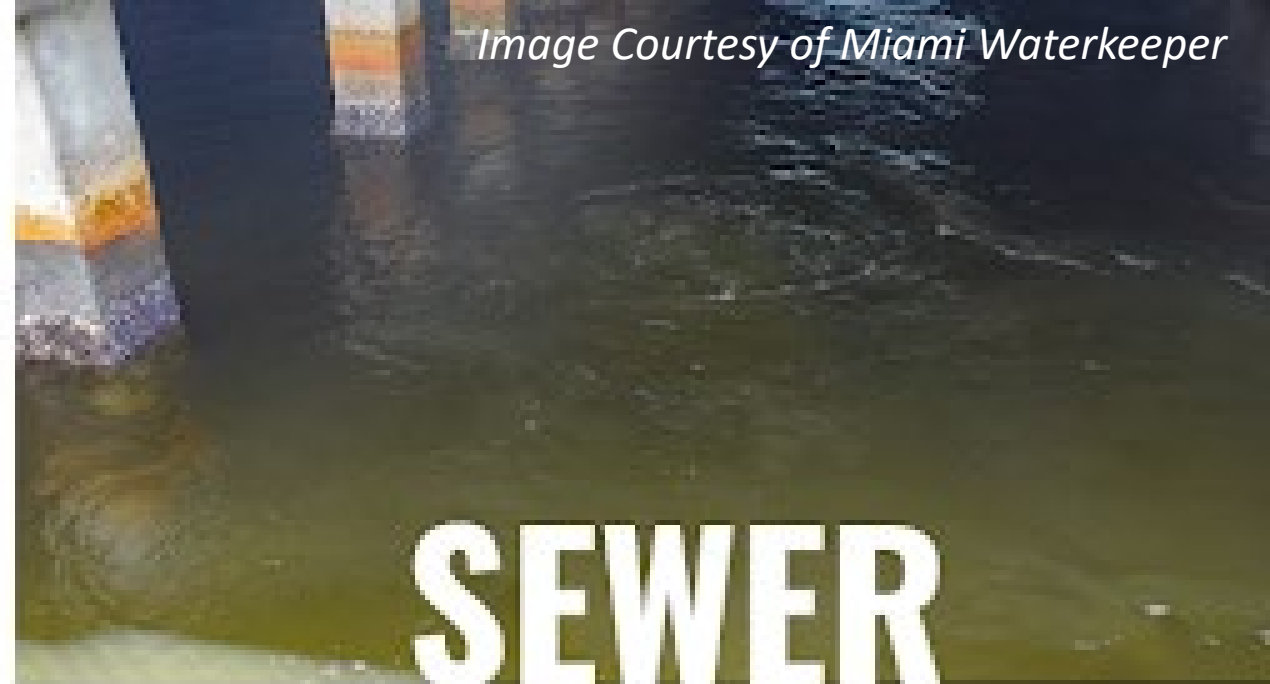


Image Courtesy of Miami Waterkeeper

SEWER

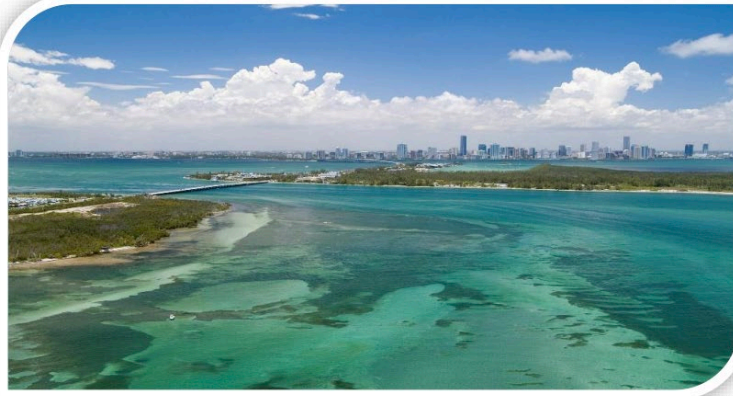


STORMWATER



FERTILIZER

Overarching Recommendations



A Unified Approach to Recovery for a Healthy & Resilient Biscayne Bay

Biscayne Bay Task Force Report and Recommendations

June 2020

Biscayne Bay Task Force Members

Irela Bagué, Task Force Chairperson, President, Bagué Group
David Martin, Task Force Vice Chairperson, President, Terra Group
Lynette Cardoch, Ph.D., Director of Resilience & Adaptation, Moffatt & Nichol
Lee Hefty, Director, Division of Environmental Resources Management, Miami-Dade County
James Murley, Chief Resilience Officer, Office of Resilience, Miami-Dade County
John Pistorino, P.E., Principal, Pistorino and Alam
Alyce Robertson, Executive Director, Downtown Development Authority
Steve Sauls, Biscayne Bay Marine Health Summit Steering Committee Member
Tiffany Troxler, Ph.D., Director of Science, Sea Level Solutions Center, Florida International University

A unified and collaborative approach to watershed restoration is urgently needed. To improve the water quality and the health of Biscayne Bay, the Task Force recommends:

Miami-Dade County's Board of County Commissioners (BCC) should **create a new intergovernmental body** called the **Biscayne Bay Watershed Management Board (WMB)**.

The WMB should be supported by the **creation of a new position** called the **Chief Bay Officer (CBO)** in the Office of the Mayor. The WMB and the CBO should be supported by County staff, appropriate technical experts and community input to improve water quality in the Biscayne Bay watershed.

The WMB will be responsible to develop and, upon approval by the BCC, implement the **Biscayne Bay Watershed Restoration Plan (WRP)**. The WMB, working with the CBO, should ensure that the following recommendations by the Task Force are implemented.

Recommendation Themes

- **Water Quality**
- **Governance**
- **Infrastructure**
- **Watershed Habitat & Natural Infrastructure**
- **Marine Debris**
- **Education & Outreach**
- **Funding**



MIAMI
WATERKEEPER®



Actions Taken

- Resolution Establishing a State of Emergency on Biscayne Bay
- Urging Resolution to US Congress and Florida Legislature for additional funding and making Biscayne Bay a State and Federal legislative priority in 2021 session
- Urging Resolution for Septic to Sewer requesting State & Federal Funding
- Resolution urging municipalities near Biscayne Bay to provide additional funding for Biscayne Bay recovery efforts
- Hiring a Chief Bay Officer - position added to the FY21 budget
- Passed Ordinance Regulating the Use of Fertilizers

An aerial photograph of a tropical coastline. In the foreground, the water is a vibrant turquoise color, revealing a sandy and rocky seabed. A small white boat with a red stripe is visible in the lower-left quadrant. To the left, a narrow strip of land with dense green vegetation and a small pier extends into the water. In the middle ground, a larger island covered in lush green trees and some buildings is visible. In the background, a city skyline with various skyscrapers and buildings stretches across the horizon under a bright blue sky with large, fluffy white clouds.

Thank you!